

N.W. 1/4 OF N.W. 1/4
SECTION 21, T.6N., R.1W., S.L.B.&M.
IN OGDEN CITY

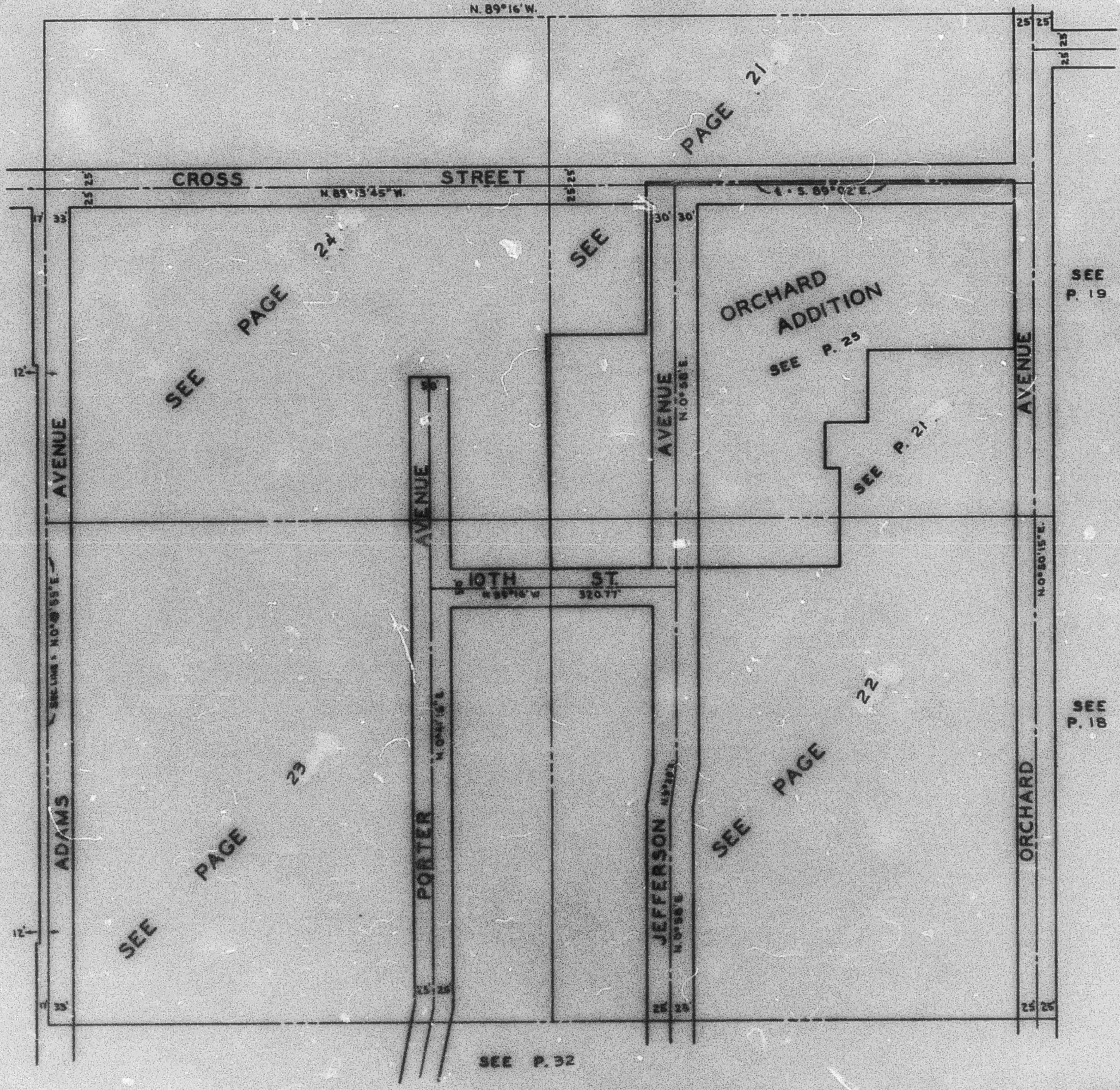
20

PREFIX 13-C20

SCALE 1" = 100'

SEE BOOK 12 P. 51

N. 89° 16' W.



SEE P. 104
Book 12

SEE PAGE 24

SEE

PAGE 21

ORCHARD
ADDITION
SEE P. 25

SEE P. 21

SEE
P. 19

SEE PAGE 23

TENTH ST
N. 89° 16' W. 320.77'

SEE PAGE 22

SEE
P. 18

SEE P. 32